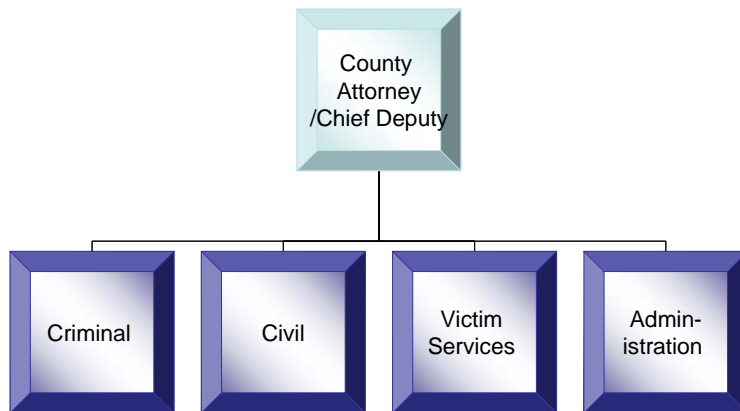


MISSION STATEMENT

To hold accountable those who commit crimes within the County, to support the statutory rights and emotional needs of the victims and witnesses involved in the prosecutorial process, and to provide skilled and efficient legal representation to the County, its officers and the political subdivisions that represent the citizens of Yuma County.

ORGANIZATION



The department is directed by the County Attorney. The County Attorney is the Chief Law Enforcement Officer of the County and is elected by the Yuma County voters.

SERVICES

Criminal: Responsible for the review of all law enforcement related investigations of any felony criminal conduct or juvenile delinquencies, rising to either a felony or misdemeanor offense, occurring in Yuma County, without restriction, or any misdemeanor criminal conduct occurring in Yuma County but outside of any incorporated area or tribal land. Prosecutes all petitions for violation of probation, prepares written responses to all requests for post-conviction relief and attends all grand jury hearings. In conjunction with Victim Services, works to ensure that crime victims are informed and have a chance to express their concerns.

Civil: Represents the County in civil matters, including defending civil lawsuits, advising on liability matters and bringing actions when indicated. The County Attorney is also the legal advisor for the Board of Supervisors; County elected officials and County officers. The County Attorney also represents the State in civil mental health commitment hearings and uncontested adoptions. The County Attorney may also represent various special taxing districts, school districts, and any other entity for which such a duty is mandated by statute.

Victim Services: In conjunction with the Criminal Division, this division of the County Attorney's Office, works to ensure all victims are informed of all automatic rights and requested rights as provided to victims pursuant to Arizona Statute. It also provides advocates for victims, assists in the Yuma County Victim Compensation Program, and makes referrals to community resources, assists with crisis intervention and orientation to victims of the criminal justice system.

Administration: Provides administrative, financial and human resources support for the department.



STRATEGIC PLAN PERFORMANCE

Performance Measure Actuals & Estimates - Attorney

The following measures are departmental priorities identified in the County-wide Strategic Plan*:

County Goal:	Actual	Actual	Actual	Estimates	
Measure:	FY 2006	FY 2007	FY 2008	FY 2009	FY 2010
Victims Services:					
Community Health, Safety and Well-being					
Victims Services Cases opened	2,976	3,739	4,543	4,989	5,936
Domestic Victims received					
Advocacy	275	299	308	358	422
Sexual Assault Victims received					
Advocacy	170	132	189	204	241
Other Victims that received					
Advocacy	875	1,105	1,359	1,449	1,710

* The items listed are not included in the adopted County-wide Strategic Plan.

EXPECTATIONS

GENERAL:

○ Customer satisfaction:

County Strategic Goal: Customer Satisfaction.

Objective: By the next survey, to have 47% or more of residents agree that criminals are competently prosecuted.

Status: The 2007 resident survey showed that 47% agreed.

Strategy: No change in the department's budget or work plan is needed to achieve this objective.

ADMINISTRATION:

○ To continue to maintain the service/operating performance levels while at the same time improving the overall office performance by improving and/or expanding said services and adding new services:

County Strategic Goal: County Resources.

Objective: Centralize the duties and obligations of the Office as it relates to finance.

Status: This objective is being achieved.

Strategy: No change in the department's budget or work plan is needed to continue achieving this objective.



EXPECTATIONS (CONTINUED)

CIVIL:

- **To provide skilled and efficient legal representation to the County, its Officers and the political subdivisions that represent the citizens of Yuma County:**

County Strategic Goal: County Resources.

Objective: Maintain all of the County's legal needs in a manner which is cost effective while still maintaining a high level of competency.

Status: This objective is being met with the exception that increases in complexity and amount of services being requested have lead to internal strains on the division itself, forcing increased consideration in the possible need of outside counsel to assist.

Strategy: No change in the department's budget or work plan is needed to continue achieving this objective.

CRIMINAL:

- **To hold accountable those who commit crimes within the County, while taking into account the statutory rights and emotional needs of the victims and witnesses involved in the prosecutorial process**

County Strategic Goal: Community Health, Safety and Well-being.

Objective: To adequately manage and effectively address all matters brought before this office by law enforcement agencies within the County and to meet the minimum set requirements addressing the rights of a victim of crime, as set forth in State Statute.

Status: This objective is currently being met at this time without any need to place minimum thresholds on filings due to lack of resources, including personnel.

Strategy: Maintain effective management of this function with continued review of trends and resources.

VICTIM SERVICES:

- **Victim welfare:**

County Strategic Goal: Community Health, Safety and Well-being.

Objective: To provide the resources necessary to achieve the goals and objectives of the division and the Office overall.

Status: The goals and objectives are currently being achieved with the exception of some initial concerns arising out of the Victim's Compensation Program and Notification to Victims of Crimes committed by Juveniles.

Strategy: Move and/or establish that all required services for misdemeanor cases be provided by the Division.

ATTORNEY



INITIATIVES NEW FOR 2010

This is a continuation budget. There are no major new initiatives, programs or additional resources.

INITIATIVES PRIOR YEAR STATUS

This was a continuation budget last fiscal year. There were no major new initiatives, programs or additional resources.

STAFFING LEVELS

Authorized Positions by Major Function

	2006-07	2007-08	2008-09	2009-10
County Attorney	1.00	1.00	1.00	1.00
Criminal	53.00	52.00	52.00	49.00
Civil	10.00	10.00	10.00	13.00
Victim Services	11.00	11.00	11.00	11.00
Administration	3.00	3.00	3.00	3.00
Total	78.00	77.00	77.00	77.00

Authorized Positions by Type of Employment

	2006-07	2007-08	2008-09	2009-10
General Fund	56.00	56.00	56.00	56.00
Special Revenue Funds	22.00	21.00	21.00	21.00
Total	78.00	77.00	77.00	77.00

There is no change in staffing levels for fiscal year 2009/10.

The ratio of positions funded by the General Fund versus positions funded by Special Revenue funds has remained consistent over the last three fiscal years.

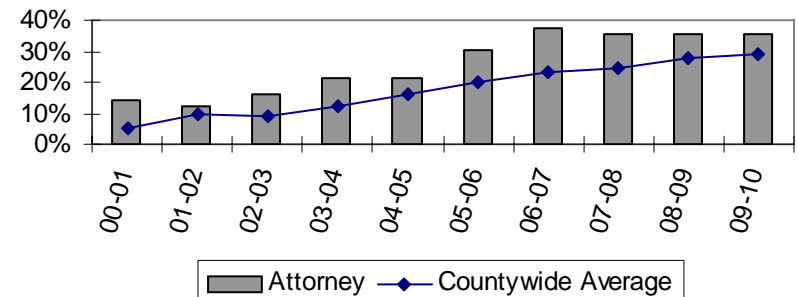


STAFFING LEVELS (CONCLUDED)

Authorized Positions by Classification

	2006-07	2007-08	2008-09	2009-10
County Attorney	1.00	1.00	1.00	1.00
Chief Deputy Attorney	3.00	3.00	3.00	3.00
Special Project Attorney	1.00	1.00	1.00	1.00
Attorney Supvr./Trial Attorney	6.00	6.00	7.00	7.00
Criminal Deputy County Attorney	5.00	5.00	4.00	3.00
County Attorney III	1.00	1.00	1.00	2.00
Attorney II	2.00	2.00	4.00	6.00
Attorney I	6.00	6.00	5.00	3.00
Special Assistant US Attorney	1.00	0.00	0.00	0.00
Office Administrator	1.00	1.00	1.00	1.00
Grants Administrator	0.00	0.00	0.00	0.00
Victim Witness Advocate II	4.00	4.00	4.00	4.00
Victim Comp Program Coordinator	1.00	1.00	1.00	1.00
Investigator	1.00	1.00	1.00	1.00
Administrative Legal Assistant	2.00	2.00	2.00	2.00
Administrative Assistant	2.00	2.00	2.00	2.00
Legal Office Supervisor	5.00	5.00	5.00	6.00
Paralegal	5.00	5.00	5.00	5.00
Office Specialist III	1.00	1.00	1.00	1.00
Admin./Evidence Custodian	0.00	0.00	0.00	0.00
Legal Secretary III	12.00	12.00	13.00	13.00
Office Specialist II	3.00	3.00	3.00	4.00
Legal Secretary II	3.00	3.00	3.00	3.00
Account Clerk III	1.00	1.00	1.00	1.00
Legal Secretary I	5.00	5.00	1.00	0.00
Legal Secretary Trainee	0.00	0.00	3.00	2.00
Account Clerk II	6.00	6.00	5.00	5.00
Total	78.00	77.00	77.00	77.00

Attorney's Growth in Positions Compared to FY00 Base Yr. - All Funds



The County Attorney's staff has grown 35.7% since fiscal year 1999-00. This is higher than the "County average" of 28.8%. The department housed 56.75 positions in fiscal year 1999-00.

ATTORNEY



FUNDING LEVELS

In the Attorney's Office, the **CRIMINAL DIVISION** is the largest of the office's four divisions. It accounts for 63.2% of the Attorney's Office's resources.

Revenue: General Fund support is at the level needed for General Fund expenditures. There are no substantial changes to Special Revenues this fiscal year.

Personnel: There are no substantial changes to the personnel budget this fiscal year.

Supplies and services: General Fund Supplies & Services remain at the same level as last fiscal year. The net decrease is primarily due to decreases in Special Revenue Supplies & Services budgets.

Criminal	Actual 2006-07	Actual 2007-08	Budget 2008-09	Estimate 2008-09	Budget 2009-10	% Change
Sources						
General Revenue	\$ 2,466,300	\$ 2,583,778	\$ 2,709,814	\$ 2,550,432	\$ 2,741,084	1.15%
Special Revenue	818,653	1,045,486	822,070	868,052	822,150	0.01%
Balance Forward	278,483	370,042	434,489	512,174	522,493	20.25%
Total Sources	3,563,436	3,999,306	3,966,373	3,930,658	4,085,727	3.01%
Uses						
Personnel	3,046,506	3,153,549	3,405,318	3,196,741	3,388,743	-0.49%
Supplies & Services	120,841	252,957	230,769	139,965	190,720	-17.35%
Capital Outlay	-	3,181	23,700	17,494	-	-100.00%
Debt Service	-	-	-	-	-	N/A
Reserves & Contingencies	-	-	252,622	-	325,128	28.70%
Transfers In & Out	26,047	77,445	53,964	53,965	181,136	235.66%
Total Uses	\$ 3,193,394	\$ 3,487,132	\$ 3,966,373	\$ 3,408,165	\$ 4,085,727	3.01%
Other Restricted	\$ 370,042	\$ 512,174	\$ -	\$ 522,493	\$ -	N/A



FUNDING LEVELS (CONTINUED)

In the Attorney's Office, **VICTIM SERVICES DIVISION** is the second largest of the office's four divisions. It accounts for 15.3% of the Attorney's Office resources.

Revenue: General Fund support is at the level needed for General Fund expenditures. There are no substantial changes in Special Revenues.

Personnel: The personnel budget for Victims Services remains at a relatively consistent level compared to last fiscal year.

Supplies and Services: There are no substantial changes this fiscal year.

Capital Outlay: There is no capital outlay budgeted this fiscal year.

Victim Services	Actual 2006-07	Actual 2007-08	Budget 2008-09	Estimate 2008-09	Budget 2009-10	% Change
Sources						
General Revenue	\$ 376,882	\$ 396,404	\$ 354,359	\$ 354,720	\$ 405,527	14.44%
Special Revenue	373,293	391,854	391,052	400,269	393,422	0.61%
Balance Forward	179,645	226,182	234,952	230,537	191,201	-18.62%
Total Sources	929,820	1,014,440	980,363	985,526	990,150	1.00%
Uses						
Personnel	577,813	606,967	645,217	646,325	654,661	1.46%
Supplies & Services	125,825	149,577	152,578	148,000	156,653	2.67%
Capital Outlay	-	-	-	-	-	N/A
Debt Service	-	-	-	-	-	N/A
Reserves & Contingencies	-	-	182,568	-	178,836	-2.04%
Transfers In & Out	-	27,359	-	-	-	N/A
Total Uses	\$ 703,638	\$ 783,903	\$ 980,363	\$ 794,325	\$ 990,150	1.00%
Other Restricted	\$ 226,182	\$ 230,537	\$ -	\$ 191,201	\$ -	N/A

ATTORNEY



FUNDING LEVELS (CONTINUED)

The Attorney's **CIVIL DIVISION** is the 3rd largest of its four divisions, and accounts for 12.6% of the Attorney's resources.

Revenue: General Fund support is at the level needed for General Fund expenditures. There is only a small amount of Special Revenue budgeted this year.

Personnel: The net increase is due to a combination of filling of vacant positions, and other personnel adjustments made during the previous fiscal year.

Supplies and Services: There are no changes to the Civil Division's Supplies & Services budget.

Capital Outlay: There is no capital outlay budgeted this fiscal year.

Civil	Actual 2006-07	Actual 2007-08	Budget 2008-09	Estimate 2008-09	Budget 2009-10	% Change
Sources						
General Revenue	\$ 669,635	\$ 663,832	\$ 761,954	\$ 758,961	\$ 772,707	1.41%
Special Revenue	99,509	111,079	108,151	96,754	1,820	-98.32%
Balance Forward	34,050	47,824	51,387	60,954	40,152	-21.86%
Total Sources	803,194	822,735	921,492	916,669	814,679	-11.59%
Uses						
Personnel	755,439	752,298	857,871	855,777	918,648	7.08%
Supplies & Services	11,661	8,147	19,277	20,740	19,277	0.00%
Capital Outlay	-	-	-	-	-	N/A
Debt Service	-	-	-	-	-	N/A
Reserves & Contingencies	-	-	44,344	-	-	-100.00%
Transfers In & Out	(11,730)	1,336	-	-	(123,246)	N/A
Total Uses	\$ 755,370	\$ 761,781	\$ 921,492	\$ 876,517	\$ 814,679	-11.59%
Other Restricted	\$ 47,824	\$ 60,954	\$ -	\$ 40,152	\$ -	N/A



FUNDING LEVELS (CONTINUED)

The Attorney's **ADMINISTRATION DIVISION** is the smallest of the office's four divisions and accounts for 8.9% of its resources. This division was created as a separate cost center in fiscal year 2006/07. Prior to that separation, the majority of costs were reported in the Civil Division, but some were in the Criminal Division as well.

Revenue: General Fund support is at the level needed for General Fund expenditures.

Personnel: There are no substantial changes to the Administration Division's Personnel budget in this fiscal year.

Supplies and Services: The net decrease from FY08/09 is compromised of decreases in Electric, Refuse Disposal, and Duplicating Equipment.

Capital outlay: Capital Outlay is budgeted for Office Machine expenditures.

Administration	Actual 2006-07	Actual 2007-08	Budget 2008-09	Estimate 2008-09	Budget 2009-10	% Change
Sources						
General Revenue	\$ 528,829	\$ 504,445	\$ 585,681	\$ 575,657	\$ 576,968	-1.49%
Special Revenue	-	-	-	-	-	N/A
Balance Forward	-	-	-	-	-	N/A
Total Sources	528,829	504,445	585,681	575,657	576,968	-1.49%
Uses						
Personnel	288,193	292,781	337,918	331,268	335,997	-0.57%
Supplies & Services	240,636	211,664	247,763	236,889	233,119	-5.91%
Capital Outlay	-	-	-	7,500	7,852	N/A
Debt Service	-	-	-	-	-	N/A
Reserves & Contingencies	-	-	-	-	-	N/A
Transfers In & Out	-	-	-	-	-	N/A
Total Uses	\$ 528,829	\$ 504,445	\$ 585,681	\$ 575,657	\$ 576,968	-1.49%
Other Restricted	\$ -	\$ -	\$ -	\$ -	\$ -	N/A